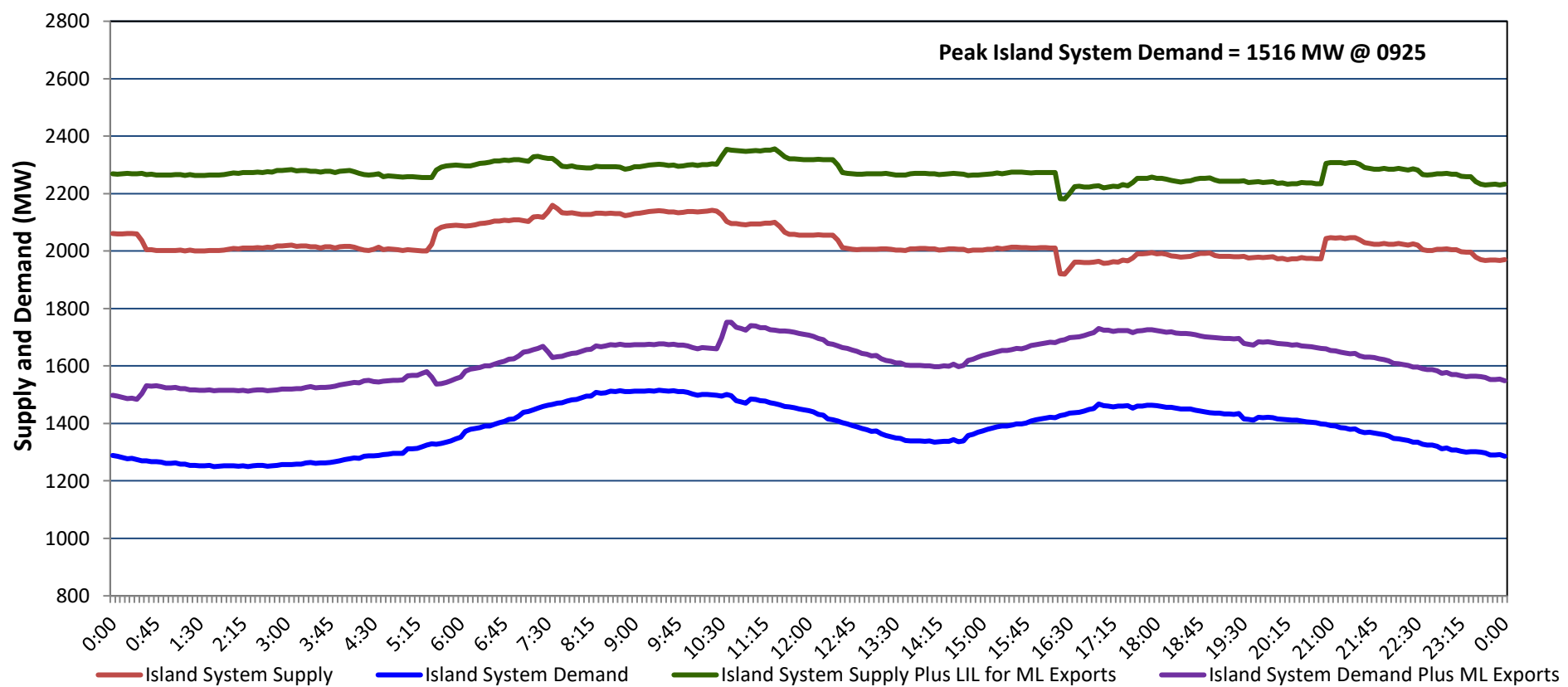


Newfoundland Labrador Hydro (NLH) Supply and Demand Status Report Filed Monday, February 17, 2025

Section 1 Island Interconnected System - Supply, Demand & Exports Actual 24 Hour System Performance For Friday, February 14, 2025



Island Supply Notes For February 14, 2025

- A As of 1059 hours, February 12, 2025, Holyrood Unit 2 available at 130 MW due to forced derating (170 MW).
- B As of 1116 hours, February 12, 2025, Holyrood Unit 3 available at 135 MW due to forced derating (150 MW).
- C As of 1449 hours, February 12, 2025, Holyrood Gas Turbine unavailable due to forced outage (123.5 MW).
- D At 1619 hours, February 14, 2025, Holyrood Unit 1 unavailable due to planned testing 90 MW (170 MW).
- E At 2051 hours, February 14, 2025, Holyrood Unit 1 available at 70 MW due to forced derating (170 MW).

Section 2 Island Interconnected System - Supply, Demand & Outlook

Sat, Feb 15, 2025	Island System Outlook ²	Seven-Day Forecast	Island System Daily Peak Demand (MW)	
			Forecast ⁸	Adjusted ⁶
Island System Supply: ⁴	2,099 MW	Saturday, February 15, 2025	1,535	1,427
NLH Island Generation: ^{3,7}	1,415 MW	Sunday, February 16, 2025	1,405	1,299
NLH Island Power Purchases: ⁵	115 MW	Monday, February 17, 2025	1,395	1,289
NP and CBPP Owned Generation:	185 MW	Tuesday, February 18, 2025	1,415	1,309
LIL/ML Net Imports to Island: ⁹	384 MW	Wednesday, February 19, 2025	1,360	1,254
		Thursday, February 20, 2025	1,430	1,323
7-Day Island Peak Demand Forecast:	1,535 MW	Friday, February 21, 2025	1,395	1,289

Island Supply Notes For February 15, 2025

- Notes:
1. Generation outages for running and corrective maintenance are included. These are not unusual for power system operations. They generally do not impact customer supply. Hydro schedules outages to system equipment whenever possible to coincide with periods when customer demands are low and sufficient supply reserves are available. However, from time to time equipment outages are necessary and reserves may be impacted.
 2. As of 0800 Hours.
 3. Gross continuous unit output.
 4. Gross output from all Island sources (including Note 3).
 5. NLH Island Power Purchases include: ML Imports, Exploits Generation, Rattle Brook, Star Lake, Wind Generation and capacity assistance (when applicable).
 6. Adjusted for interruptible load and the impact of voltage reduction when applicable.
 7. Due to limitations inherent in the design of combustion turbines, the output of combustion turbines may be reduced in the event that ambient temperatures exceed the threshold required for full rated output. This threshold is dependent on the design of each turbine.
 8. Does not include ML Exports.
 9. LIL Import sunk in the Island System. Actual LIL flows will be restricted by various system conditions including, but not limited to, Island Load, ML Exports and Avalon Unit status.

Section 3 Island Peak Demand and Exports Information Previous Day Actual Peak and Current Day Forecast Peak

Fri, Feb 14, 2025	Island Peak Demand ¹⁰	9:25	1,516 MW
	Exports at Peak		162 MW
	LIL Net Imports to Island		7,079 MWh
Sat, Feb 15, 2025	Forecast Island Peak Demand		1,535 MW

- Notes: 10. Island Demand is supplied by NLH generation and purchases, LIL Imports plus generation owned and operated by Newfoundland Power and Corner Brook Pulp & Paper (Deer Lake Power, DLP).